



City of Longwood

Fostering citizen trust and cultivating a prosperous community

REQUIREMENTS FOR A RESTRIPING/RESURFACING PERMIT:

Relevant Code:

LDC 3.6.1.C.1

Each parking lot shall meet design requirements of the City of Longwood in order to provide appropriate access to a public street, maneuvering, and access aisles. All access ways for a proposed development that do not meet City Code shall be brought up to code and shall meet the streets and stormwater requirements for the city. Where permits are required for resurfacing of parking lots, the parking lot shall be striped, ADA compliant handicap spaces shall be provided, and the parking lot shall otherwise be brought into compliance with this Code to the maximum extent practicable.

SUBMITTAL REQUIREMENTS:

- A current certified and to scale survey, or signed and sealed site plan shall be submitted with, at minimum, all of the following information:
 - All proposed parking spaces and pavement markings and
 - All signs, such as directional, stop, and any miscellaneous FDOT required
 - All proposed drive aisles and their associated widths dimensions
 - All proposed parking spots length and width dimensions
 - All existing ADA access ramps, with the associated widths, and slopes
 - All existing architectural barriers, as outlined in section 202.6 of the Florida Accessibility Code
- Per City's Land Development Code-
 - Standard Bay Dimension is 9'X20' (40% of spaces may be 18' in length)
 - Handicapped Bay Dimension is 12'x20'
 - One-way minimum driveway width 12 feet (no parking either side)
 - Two-way minimum driveway width 18 feet (no parking either side)
 - One-way access aisle width 14 feet; 17 feet for parallel parking
 - Two-way access aisle width 22 feet for 45- and 60-degree parking; 24 feet for 90 degree and 20 feet for parallel parking
 - All paved parking spaces shall have lines between spaces to indicate individual stalls- yellow or white pavers can also be utilized between spaces
 - A table summarizing the total number of parking spots and the length (18' vs 20'). Table must include the total required ADA accessible parking spots per the Florida Accessibility Code.



City of Longwood

Fostering citizen trust and cultivating a prosperous community

- When adjacent to a required landscaped area, wheel stops are required and shall be located two and one-half feet from the front end of the stall
- All wheel stops shall be centered in parking stall to ensure a three feet pedestrian clearance between ends and shall be colored or covered with reflective material to provide contrast with adjacent pavement. The recommended maximum height for wheel stops shall be four inches and any deviation shall be at the discretion of the city engineer

- When the parking spaces and the adjacent sidewalk are flush (no curb), wheel stops or bollards are required.

- Pervious parking lots (unpaved) to be paved will be required to meet the City of Longwood and St. Johns River Water Management District Stormwater requirements. This may include the installation of a stormwater collection system (inlets and piping) along with a pond or other type of stormwater storage and treatment.

- Alternative paving materials such as semi-pervious pavers, pervious pavers (i.e. PAVEDRAIN), pervious concrete or a gravel/geosynthetic layer are encouraged when applicable to keep overall impervious percentages lower and to reduce stormwater run-off.

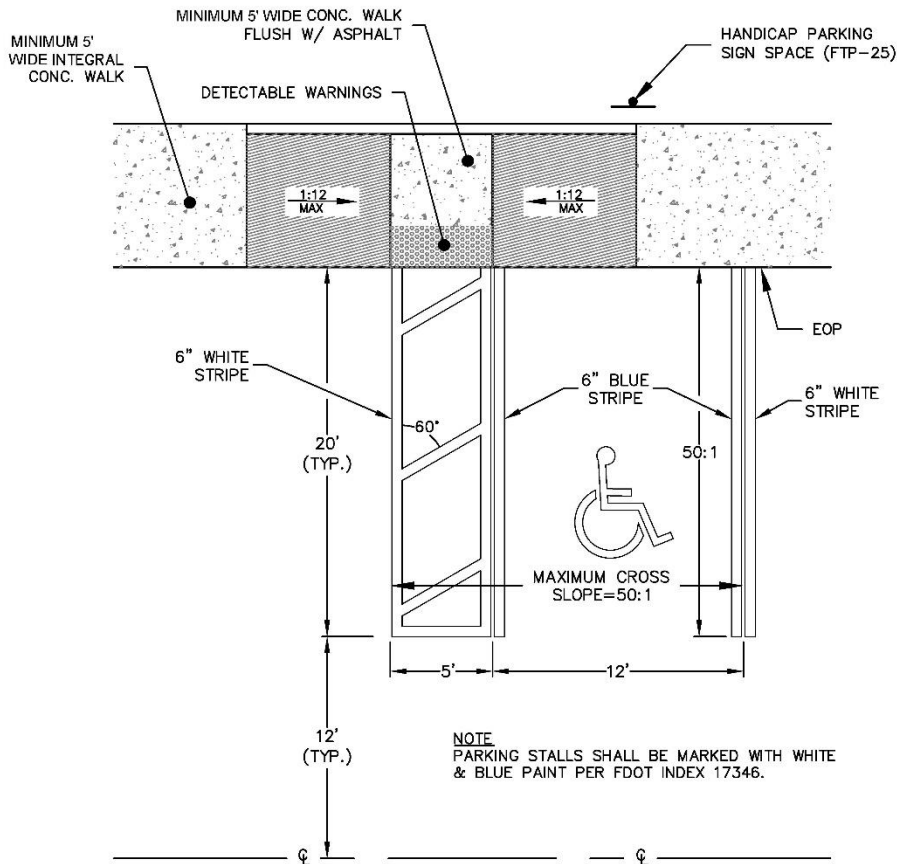
- Handicap pavement marking and signs to be updated as shown in Detail 1.

- Handicap access ramps/sidewalks shall be in accordance with ADA requirements. Any existing ADA ramps, not in compliance with the most recently adopted Florida Accessibility Code must be removed, and compliant access ramp system installed. Plan must include details showing location, size, and all applicable slopes.

- The supplemental sign must state "\$250 Fine", "Per ordinance 750" or the project will not receive final acceptance.

- All roadway striping, crosswalks, stop bars, and centerlines shall utilize thermoplastic paint.

- The applicant should refer to Chapter 6, Section 2 entitled "PAVEMENT MARKINGS/SIGNING/SIGNALIZATION" of the *City of Longwood Manual of Standards for City Streets, Stormwater Systems and Subdivision* for permanent pavement marking and signing requirements.



NOTE
PARKING STALLS SHALL BE MARKED WITH WHITE
& BLUE PAINT PER FDOT INDEX 17346.



NOTE:

1. ACCESSIBILITY:
 - A. IN ACCORDANCE WITH THE FLORIDA ACCESSIBILITY CODE FOR BUILDING CONSTRUCTION, 4.1.3 SECTION (1), DATED OCT. 1997 AT LEAST ONE ACCESSIBLE ROUTE COMPLYING WITH 4.3 SHALL CONNECT ACCESSIBLE BUILDING OR FACILITY ENTRANCES WITH ALL ACCESSIBLE SPACES AND ELEMENTS WITHIN THE BUILDING OR FACILITY. DOORS ACCESSING THE BUILDING MUST BE DEPICTED ON SITE PLAN. RAMP DETAILS WITH SLOPE INFORMATION SHALL BE DEPICTED ON SITE PLAN.
 - B. THE LOCATION OF HANDICAPPED PARKING STALLS, LOADING ZONES, SIDEWALKS AND RAMPS ON SITE SHALL MEET CHAPTER 316.1955 OF THE FLORIDA ACCESSIBILITY CODE: RAMPS SHALL NOT EXCEED 12:1 SLOPES PARKING SPACE AND AISLE SHALL NOT EXCEED 50:1 CROSS-SLOPE. (TLO 11-16-96) 12-11-96

NOTE: (HANDICAP SIGN ONLY)

1. ALL LETTERS SHALL BE BLACK AND SHALL CONFORM TO FDOT "DESIGN STANDARDS".
2. TOP PORTION OF SIGN SHALL HAVE REFLECTORIZED (ENGINEERING GRADE) BLUE BACKGROUND WITH WHITE REFLECTORIZED LEGEND AND BORDER.
3. BOTTOM PORTION OF SIGN SHALL HAVE A REFLECTORIZED (ENGINEERING GRADE) WHITE BACKGROUND WITH BLACK BORDER.
4. ONE SIGN REQUIRED FOR EACH PARKING SPACE.
5. BOTTOM OF SIGN SHALL BE 7" ABOVE GROUND IN ACCORDANCE WITH FDOT "DESIGN STANDARDS".